



OUR GOAL IS TO CREAT VALUE AND SHARE IT WITH YOU

S-STEEL CO.



1

Company overview

2

Organization

3

Products & Capability & Facilities

4

Supply Record & Certificate

5

Contact us

S-STEEL CO.



COMPANY OVERVIEW

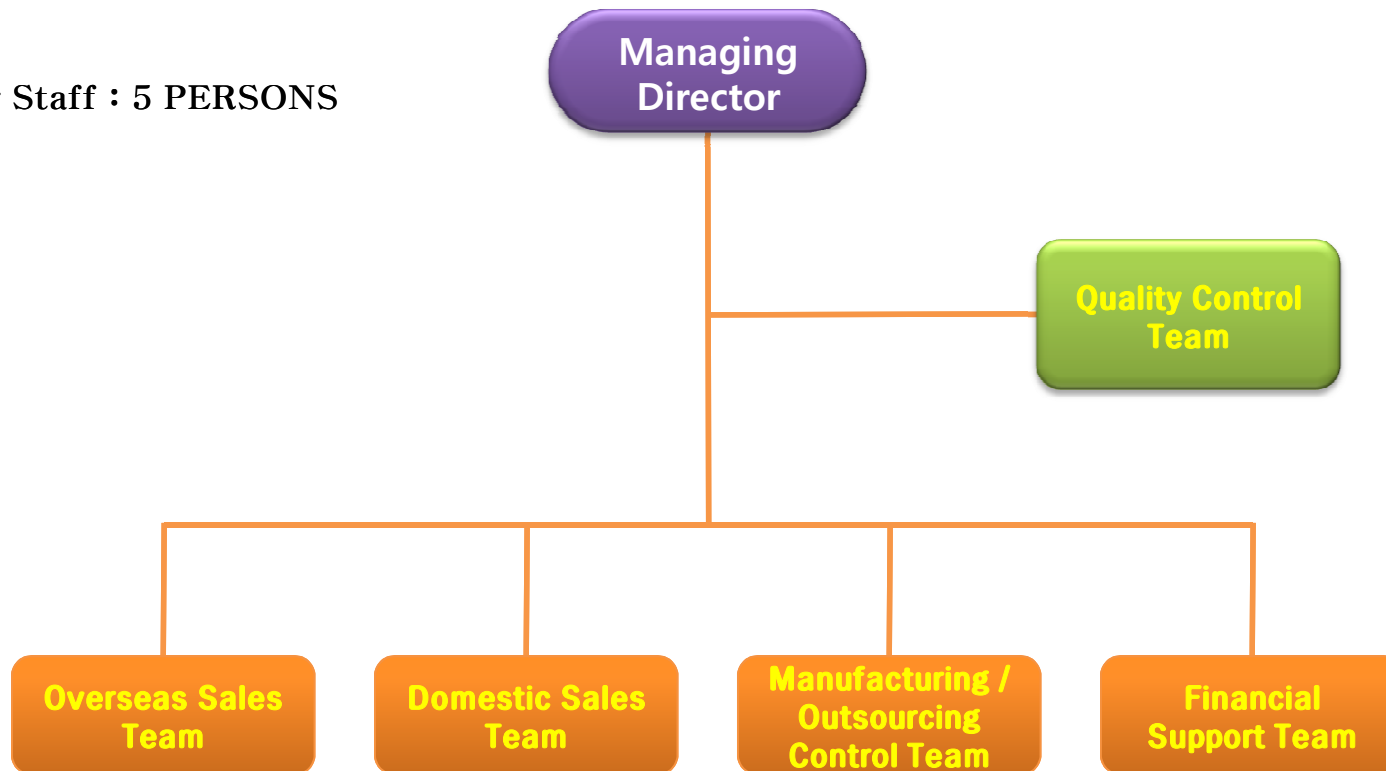
With expertise & powerful network in supplying plates to GAS & OIL, CHEMICAL & PETRO CHEMICAL, SHIPBUILDING, POWER PLANTS Filed more than 20 years, We S-STEEL are challenging and expanding our market to oversea by producing and exporting DISHED HEADS, SHELLS, PLATES, FORGED ITEMS, TUBE, PIPE, FLANGES with best quality, on time delivery at reasonable prices on the OEM basis with strict quality control. We hope to grow with you and make a sincere contribution for all your projects.

S-STEEL CO.



ORGANIZATION

- Working Staff : 5 PERSONS



S-STEEL CO.

SUPPLY PRODUCTS



OUR GOAL IS TO SUPPLY VALUE AND SATISFACTION

S-STEEL CO.

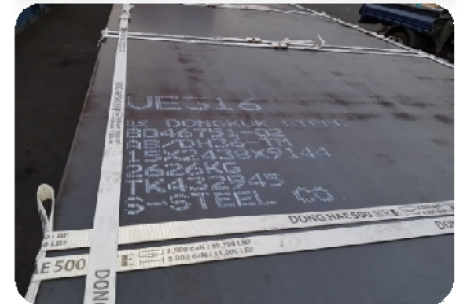


PLATES

| | MAKER : POSCO, DONGKUK, HYUDAI, Japan, Europe, China BRAND |
|------------------------------------|---|
| Carbon Steel (Marine Structure) | SA516, SA537, SA299, SA302, SA204, SA533-B, AB/AH36, AB/DH36, S355M, S460M etc. |
| Low Alloy Steel | SA387-5, SA387-11, SA387-22, SA387-91, HASTELLOY, INCONEL etc. |
| Stainless Steel | SA240-304(L), 316(L), 321, 347, 410(S), 904(L), S31803, S32205, S32750, etc. |
| Titanium Steel | SB265-Gr. 1, 2, 7, 12 |



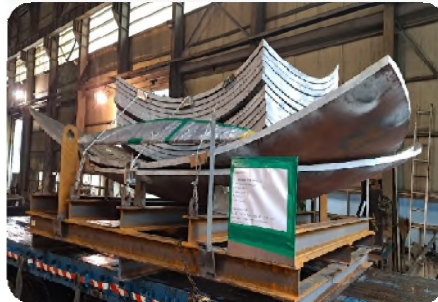
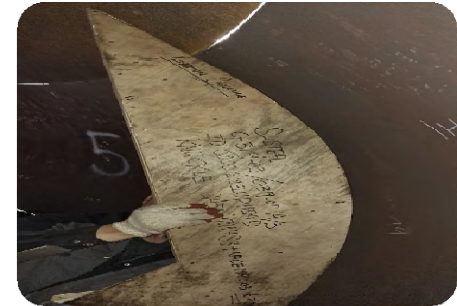
S-STEEL CO.



DISHED HEADS

| TYPE | THICKNESS | DIAMETER | REMARK |
|----------------------|-------------|-------------------|--------------------------------------|
| DISHED HEADS | 4 ~ 100 mm | 150 ~ 10,000 mm | COLD SPINNING & PRESS & SEG. FORMING |
| | 15 ~ 230 mm | 150 ~ 3,500 mm | HOT FORMING |
| HEMI SPHERICAL HEADS | 4 ~ 130 mm | 1,000 ~ 10,000 mm | COLD SEG. FORMING |
| | 15 ~ 230 mm | 150 ~ 3,000 mm | HOT FORMING |
| CONES | 4 ~ 120 mm | 1,000 ~ 10,000 mm | COLD SEG. FORMING |
| | 15 ~ 230 mm | 1,000 ~ 10,000 mm | HOT SEG. FORMING |
| SPHERICAL TANKS | 4 ~ 130 mm | 1,000 ~ | COLD FORMING |





FACILITIES (1)

| EQUIPMENT | CAPACITY | PURPOSE | BRAND / ORIGIN |
|--------------------------|------------------|------------------|------------------|
| 1500 TON HYDRAULIC PRESS | MAX T40 | COLD PRESS | HYUN-A / KOREA |
| 2500 TON HYDRAULIC PRESS | MAX T70 | COLD PRESS | HYUN-A / KOREA |
| 5000 TON HYDRAULIC PRESS | MAX T230 | COLD & HOT PRESS | GUEM GOK / KOREA |
| FALNGE MACHINE | MAX T36 x ID7000 | SPINNING | HYUN-A / KOREA |
| FLANGE MACHINE | MAX T26 x ID6200 | SPINNING | HYUN-A / KOREA |



PRESS(1500T)



PRESS(2500TON)

S-STEEL CO.



FACILITIES (2)



5000TON PRESS



Capacity : Max. Thickness 26 T / Max. Length ID 6200

FLANGING M/C



Capacity : Max. Thickness 36 T / Max. Length ID 7000

FLANGING M/C

S-STEEL CO.

SHELL

| TYPE | THICKNESS | DIAMETER | REMARK |
|------------------------------|-------------|-----------------|-----------------------|
| SHELL ROLLING & HALF BENDING | 10 ~ 200 mm | 350 ~ 13,000 mm | MAX. LENGTH 12,700 mm |





FACILITIES (1)

| EQUIPMENT | CAPACITY | PURPOSE | BRAND / ORIGIN |
|----------------------------|------------------------------|------------|-------------------|
| 20,000 TON HYDRAULIC PRESS | MAX. T250 x LENGTH 12,700 mm | BENDING | EUN KWANG / KOREA |
| 12,000 TON HYDRAULIC PRESS | MAX. T250 x LENGTH 7,000 mm | BENDING | EUN KWANG / KOREA |
| 5,000 TON HYDRAULIC PRESS | MAX. T100 x LENGTH 4,400 mm | BENDING | EUN KWANG / KOREA |
| 3,000 TON HYDRAULIC PRESS | MAX. T80 x LENGTH 7,500 mm | RE-BENDING | EUN KWANG / KOREA |
| 3,000 TON ROLLING MACHINE | MAX. T140 x LENGTH 3,300 mm | ROLLING | EUN KWANG / KOREA |
| 2,000 TON ROLLING MACHINE | MAX. T110 x LENGTH 4,600 mm | ROLLING | EUN KWANG / KOREA |
| 1,500 TON ROLLING MACHINE | MAX. T80 x LENGTH 4,000 mm | ROLLING | EUN KWANG / KOREA |
| 1,000 TON ROLLING MACHINE | MAX. T40 x LENGTH 4,400 mm | ROLLING | EUN KWANG / KOREA |
| 700 TON ROLLING MACHINE | MAX. T25 x LENGTH 6,000 mm | ROLLING | EUN KWANG / KOREA |

S-STEEL CO.

FACILITIES (2 – BENDING)

◇ 20,000 TON HYDRAURIC PRESS



<20,000TON HYDRAURIC PRESS(Max.Length:12,700mm)>

◇ 12,000 TON PRESS



◇ 5,000 TON PRESS



◇ 3,000 TON PRESS



* ONLY RE-BENDING (70T, ID : 3,500)

FACILITIES (3 – ROLLING)

◇ ROLL BENDING M/C(6,000L)



◇ ROLL BENDING M/C(4,500L)



◇ ROLL BENDING M/C(4,400L)



◇ ROLL BENDING M/C(4,000L)



◇ ROLL BENDING M/C(3.2M)





TUBE AND PIPE

HEAT EXCHANGER TUBES

| | | |
|---------------------------|---|--|
| Steel Grade | Stainless Steel | 304/304L 316/316L 316T1 310S 317L 321/321H 347/347H 410S S31803 S32750 |
| | Alloy & Carbon Steel | A213-T11 ~T91 A210 A179 A192 A178 |
| | Special Steel | Inconel600 Inconel625 Incoloy800 Incoloy825 Monel & Others |
| Specification | ASTM ASME AISI DIN JIS | |
| Product Range | Out Diameter | 2.0mm ~ 88.9mm |
| | Wall Thickness | 0.3mm ~ 8.0mm |
| | Maximum Length | 32 meters |
| Main Product Range | Out Diameter | 31.75mm 25.40mm 19.05mm 15.88mm 12.70mm 9.53mm 6.35mm |
| | Wall Thickness | 2.77mm .41mm 2.11mm 1.65mm 1.24mm 0.89mm |
| Purpose | Heat Exchanger, Boiler, Atomic Power Plant, Desalination Plant, Condenser, Super Heater | |

S-STEEL CO.



TUBE AND PIPE

STAINLESS PRECISION TUBES

| | | |
|----------------------|-------------------------------|--|
| Steel Grade | Stainless Steel | 304/304L 316/316L 316T1 310S 317L 321/321H 347/347H 410S S31803 S32750 |
| | Special Steel | Inconel600 Inconel625 Incoloy800 Incoloy825 Monel & Others |
| Specification | ASTM ASME AISI DIN JIS | |
| Specification | Seamless / Semi-Seamless Tube | |
| Product Range | Inner Diameter | 1.0mm ~ 88.0mm |
| | Wall Thickness | 0.05mm ~ 8.0mm |
| Purpose | Precision Cylinder | Gas Cylinder Air Cylinder Oil Cylinder |
| | Precision Parts | Fine Electric & Electronic Parts, Medical Appliance, Bending Machine, Compressor, Fitting, Tubing, Automobile Parts, Measurement Appliance, Precise Shaft & Roller |
| | Special Parts | Semi-conductor, Transportation Line, Ship Building, Aero Space Industry |

S-STEEL CO.

TUBE AND PIPE

STAINLESS TUBES

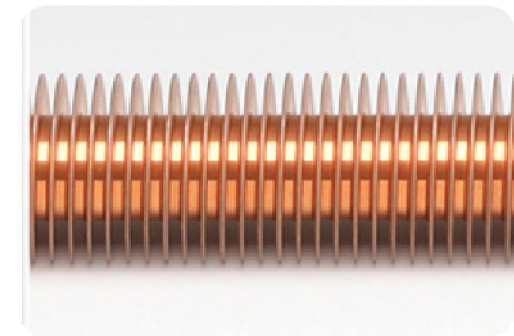


TUBE AND PIPE

U BENDING TUBES



FINNED TUBE



FLANGES

STANDARD



NON-STANDARD



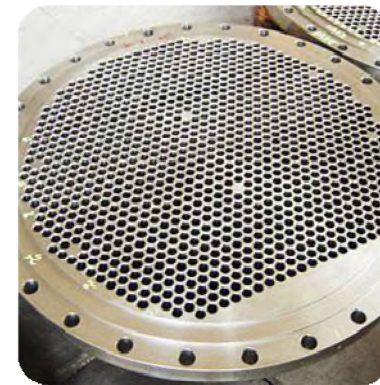
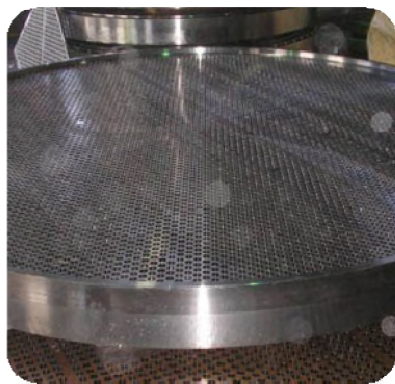


FORGED ITEMS & TUBE SHEET

FORGED ITEMS



TUBE SHEET



S-STEEL CO.

CERTIFICATE ISO 9001



International Certification Registrar - International Certification Registrar



Certificate of Registration

This is to certify that :

S-STEEL CO.

#21, Yangdal-ro 9 beon-gil, Buk-gu, Busan, Korea

Has been assessed by International Certification Registrar Ltd., in respect of their Quality Management Systems and found to comply with

ISO 9001:2015

Approval is hereby granted for registration providing the rules and conditions relating to certification are observed at all times.

Certification Scope

Production and Export of Steel Plate, Dished Head, Shell, Tube & Pipe, Forged Items (Flange, Fitting)

Certificate Issue Date : 24th July 2020

Initial Issued Date : 24th July 2020

Expiration Date : 23rd July 2023

Certificate No. : Q346020

⌘ This certificate is valid by completion of surveillance audit which is conducted within 12 months from the certification date.

The Seal of ICR Limited was hereto affixed in the presence of :

President



*This certificate is intellectual property of ICR.
*This certificate is only valid by completion of surveillance audit which is conducted at least once a year.
*You can verify the authenticity of this certificate on "Certification Center" at www.icrsg.com
*If you can not measure the certificate, this certificate shall be returned to ICR.

S-STEEL CO.



CONTACT US

Office

#21, Yangdal-ro 9 beon-gil, Buk-gu, Busan, Korea

Factory & Warehouse

#30, Gupo 1-gil, Chilseo-myeon, Haman-gun, Gyeongsangnam-do, Korea

Tel & Fax

+82-51-365-0128 & +82-504-369-2301

E-mail

sales@s-steel.co.kr

Website

www.s-steel.co.kr

S-STEEL CO.



THANK YOU

S-STEEL CO.